

1º Congreso Internacional de Ciencias Humanas - Humanidades entre pasado y futuro. Escuela de Humanidades, Universidad Nacional de San Martín, Gral. San Martín, 2019.

## **Women in Elizabethan times through Shakespeare's eyes.**

López, Leonela, Olivera, Camila, Gomez, Nadia y Stul, Mariela.

Cita:

López, Leonela, Olivera, Camila, Gomez, Nadia y Stul, Mariela (2019). *Women in Elizabethan times through Shakespeare's eyes. 1º Congreso Internacional de Ciencias Humanas - Humanidades entre pasado y futuro. Escuela de Humanidades, Universidad Nacional de San Martín, Gral. San Martín.*

Dirección estable:

<https://www.aacademica.org/1.congreso.internacional.de.ciencias.humanas/1655>

ARK: <https://n2t.net/ark:/13683/eRUe/hsQ>



Esta obra está bajo una licencia de Creative Commons.  
Para ver una copia de esta licencia, visite  
<https://creativecommons.org/licenses/by-nc-nd/4.0/deed.es>.

*Acta Académica es un proyecto académico sin fines de lucro enmarcado en la iniciativa de acceso abierto. Acta Académica fue creado para facilitar a investigadores de todo el mundo el compartir su producción académica. Para crear un perfil gratuitamente o acceder a otros trabajos visite:*  
<https://www.aacademica.org>.

# WOMEN IN ELIZABETHAN TIMES THROUGH SHAKESPEARE'S EYES



GOMEZ NADIA (UNSAM, BUENOS AIRES, ARGENTINA)  
LÓPEZ LEONELA (UNSAM, BUENOS AIRES, ARGENTINA)  
OLIVERA CAMILA (UNSAM, BUENOS AIRES, ARGENTINA)  
STUL MARIELA (UNSAM, BUENOS AIRES, ARGENTINA)

## INTRODUCTION

Elizabethan times lasted from 1558 to 1603 and it was a period of great social welfare. However, women still did not have rights as they are known nowadays in England. This reality is accurately reflected in William Shakespeare's literature works throughout a very famous era of the English Theatre.

## PURPOSE

To reveal how women were represented by the literature of those times and to study the role of daughters in Hamlet (1603) and Romeo and Juliet (1595) by taking into account how Juliet and Ophelia are not able to assert their free will and self-determination and how their parental figures and society denied their right to a free choice.

## METHOD

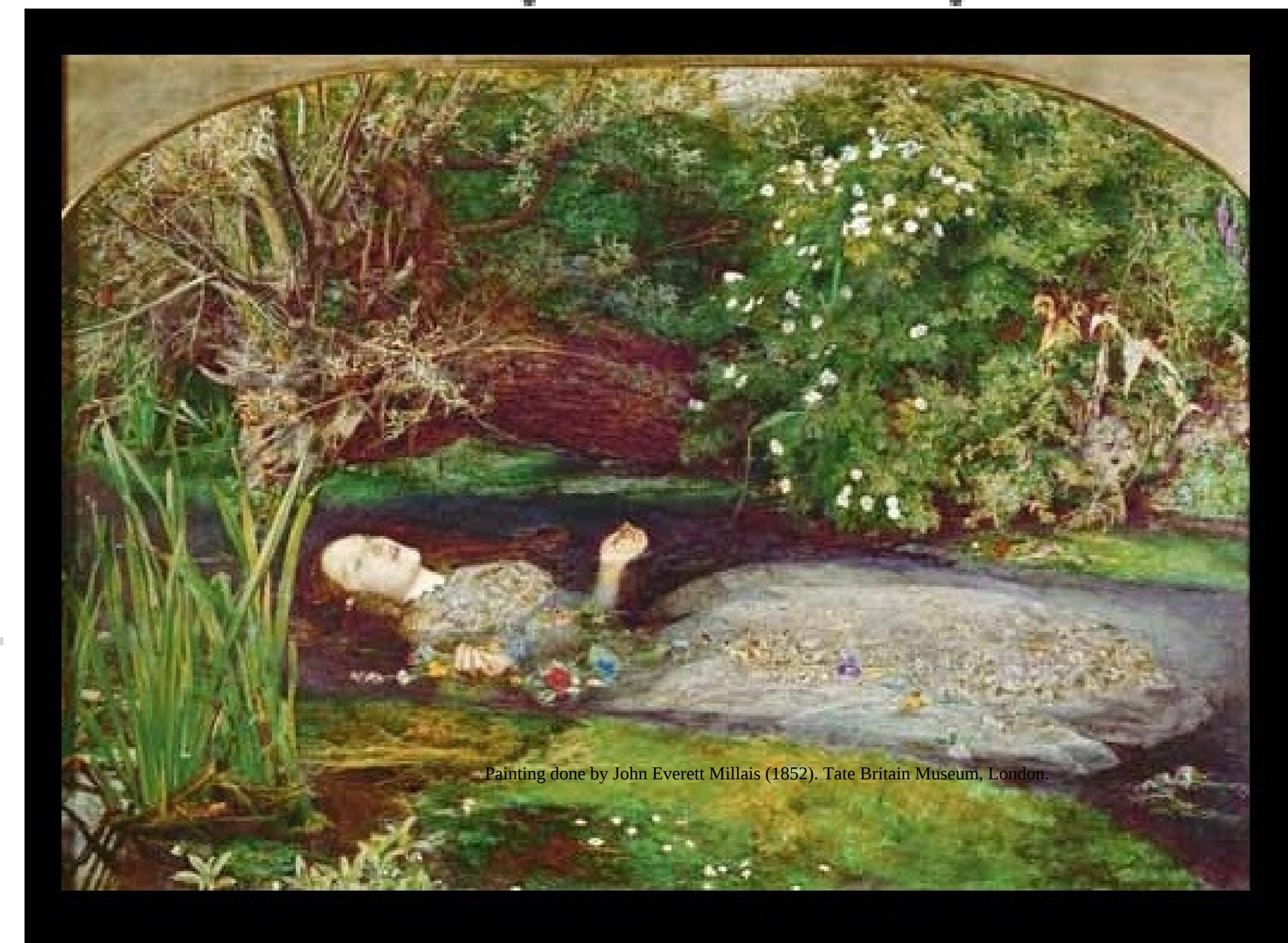
Comparative literature, based on the formulation of objectives and hypothesis, as well as its following verification

In order to assert what has just been introduced, it is crucial to present interesting voices, such as E. M. W. Tylliard, Sharon Hamilton and Theresa Kemp, who have analyzed in depth that period of history in England.

## JULIET

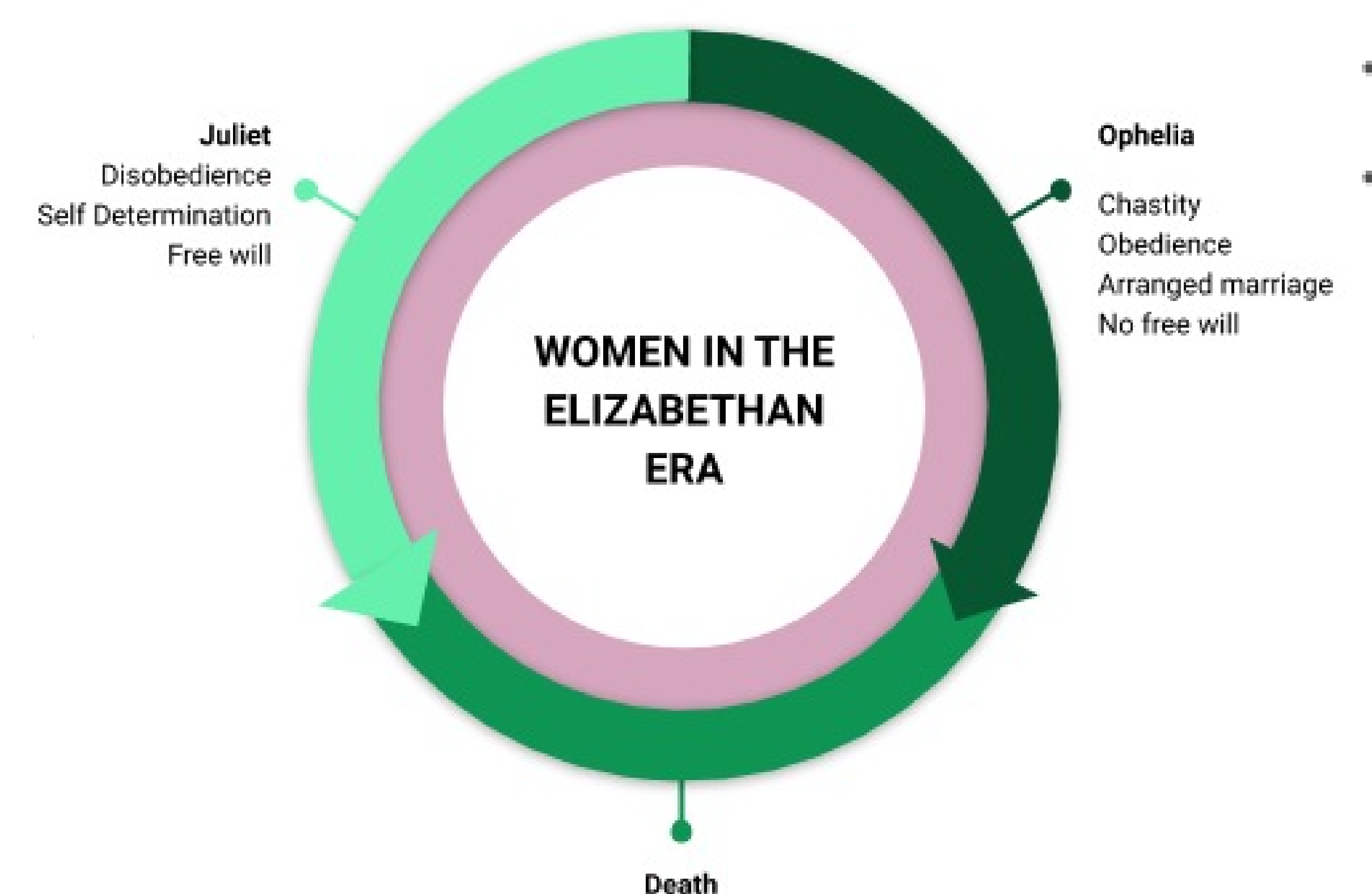


## OPHELIA



## RESULTS

- 1- Women were subdued to the misogynist and patriarchal society of the Elizabethan era. They were not able to choose freely or make their own decisions.
- 2- Ophelia and Juliet are clear examples of the lack of free will and self determination women had in those times.
- 3- In the case of Juliet, although she challenges her father and the society of that time, the fact that she does not fulfill her father's will leads her to death, whereas in the case of Ophelia, her amenable personality prevents her from questioning the male figures' ordinances which also lead her towards a dreadful final



## CONCLUSION

- The analysis of this work has shown that women in Elizabethan times were not able to assert their free will and self determination.
- Parental figures and the patriarchal society of those times denied daughters the right to choose freely.
- Ophelia and Juliet are examples of young women who were condemned to live under men's power which in the end leads them to death.

### Bibliography:

- Hamilton, Sharon. Shakespeare's Daughters. London: McFarland, 2003. (Printed)  
Kemp, Theresa. Women in the Age of Shakespeare. Santa Barbara: Greenwood Press, 2010. (Printed)  
Shakespeare, William. Hamlet. Hertfordshire: Wordsworth, 2002. (Printed)  
Shakespeare, William. The New Cambridge Shakespeare: Romeo and Juliet. Cambridge: Cambridge University Press, 1984. (Printed)  
Tylliard, E. M. W. The Elizabethan World Picture. London: Chatto & Windus, 1943. (Printed)